

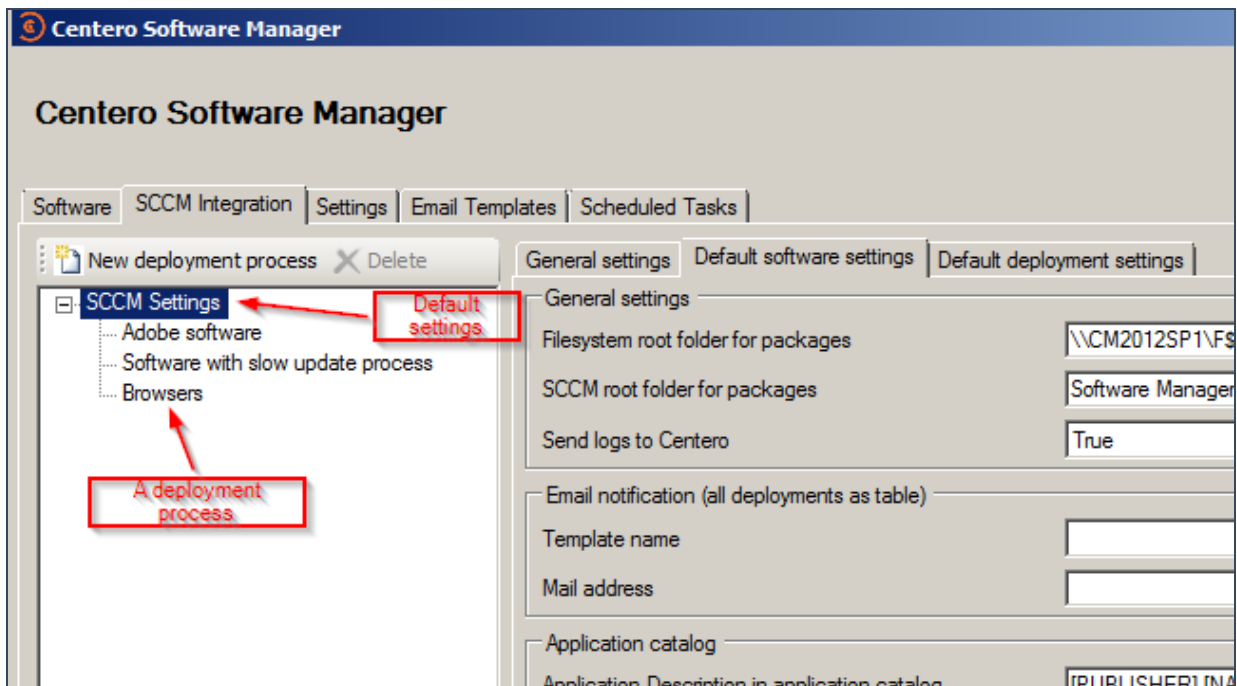
CSM for SCCM - Deployment processes

Last Modified on 16/10/2017 2:24 pm EEST

Deployment process overview

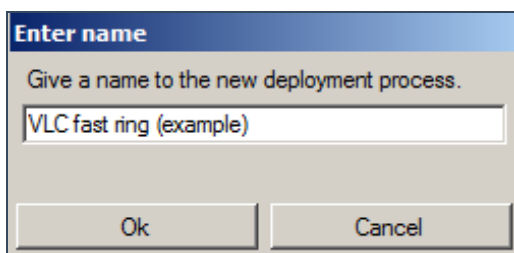
Deployment processes can be defined in SCCM integration tab. The deployment process navigation is in a tree form and default settings are always in the top.

Created deployment processes will appear in the tree view accordingly.

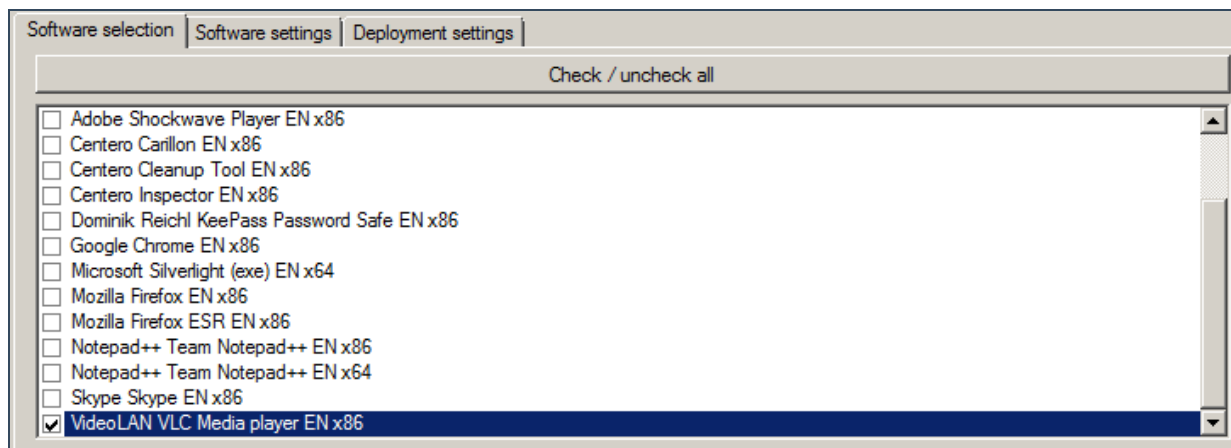


Creating a new deployment process (example)

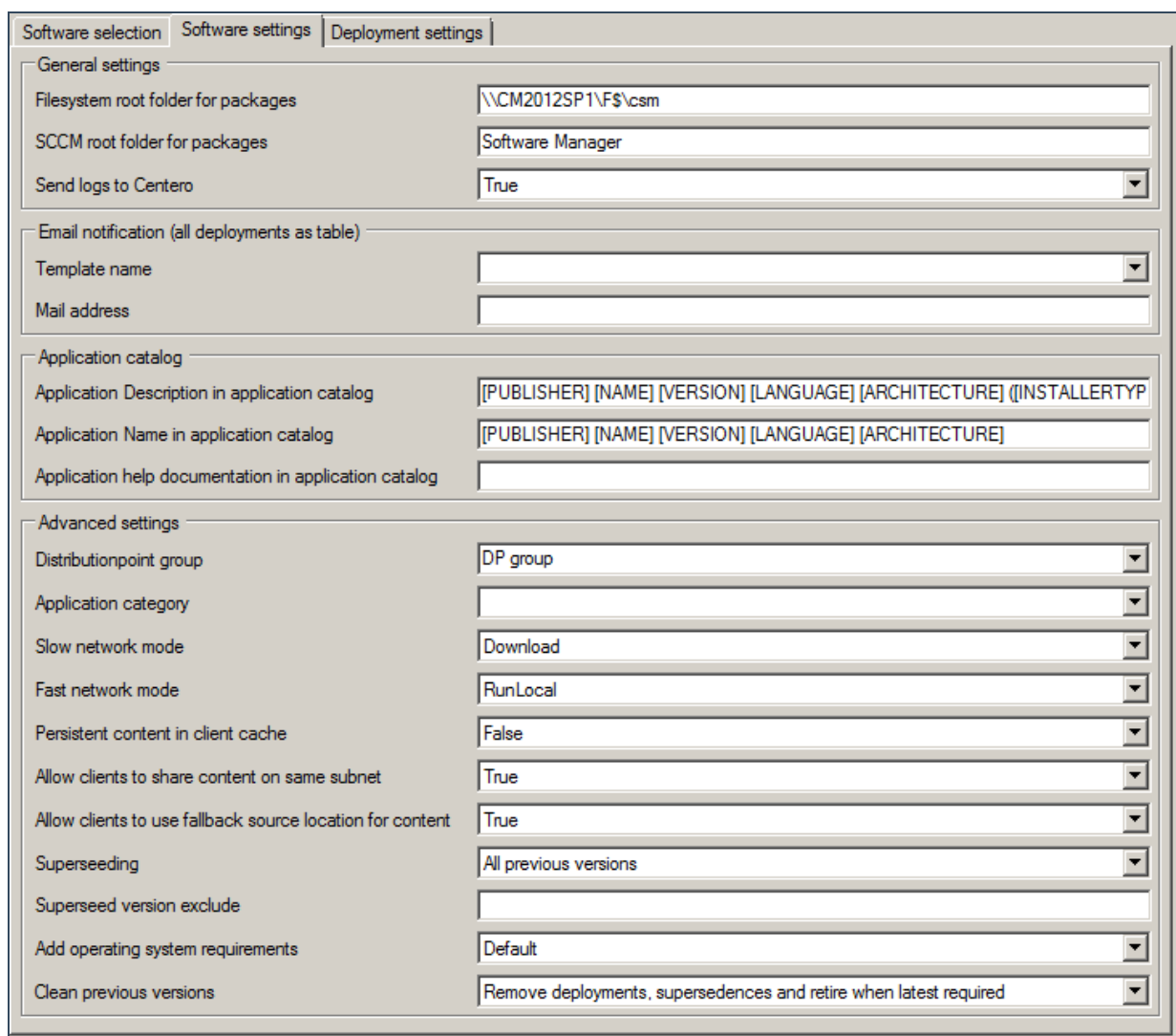
1. Click on **New deployment process** and name it.



2. Select the software you want on this process.



3. Define the expected configuration. If you defined these settings in the default deployment process they will be the same. The most of the time these settings are valid as they are.



4. Define advanced deployment settings as you see fit. In this scenario we have used a rather quick deployment pace. All the three deployment steps are followed through in 5 work days.

Software selection | Software settings | **Deployment settings**

Collections

New Delete Move up Move down Simulated publish time: 13.09.2017 10:24

Collection	Available (simulated)	Required (simulated)
1st level testing	ma 18.9. 16:00	ma 18.9. 16:00
2nd level testing	ke 20.9. 16:00	ke 20.9. 16:00
Production	pe 22.9. 16:00	pe 22.9. 16:00

Deployment settings

Collection name: Production

Collection type: Device

Deploy purpose: Required

User notification: Display all

Comment:

Scheduling

Make deployment available: Immediately after 0 working days on friday at any time

And force installation: Immediately after working days on at

Email notifications

Template name: EmailTemplate - All deployments table

Email address: deployments@centero.fi

Apply Close