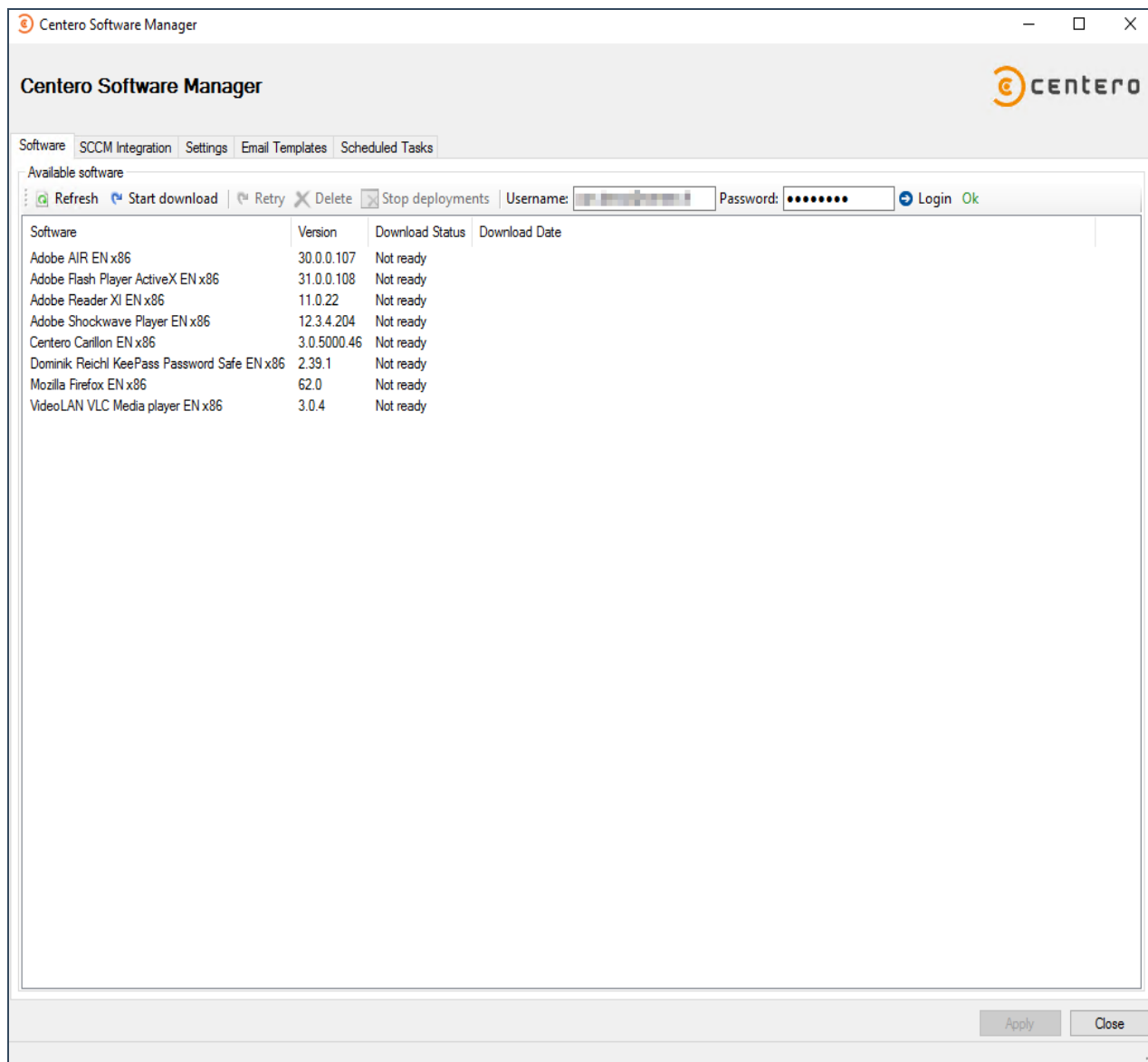


CSM - Advanced Centero Software Manager

1. After the initial configuration wizard completes, CSM for SCCM will launch. The default view is the **Software** tab. It shows the most recent versions of 3rd party software and their status, whether they are downloaded or deployed.



2. **SCCM-integration** tab is basically the view where all the advanced configuration can be defined. The view has three sub-tabs.

General settings

Service status - SCCM integration is basically the power button of CSM for SCCM. CSM



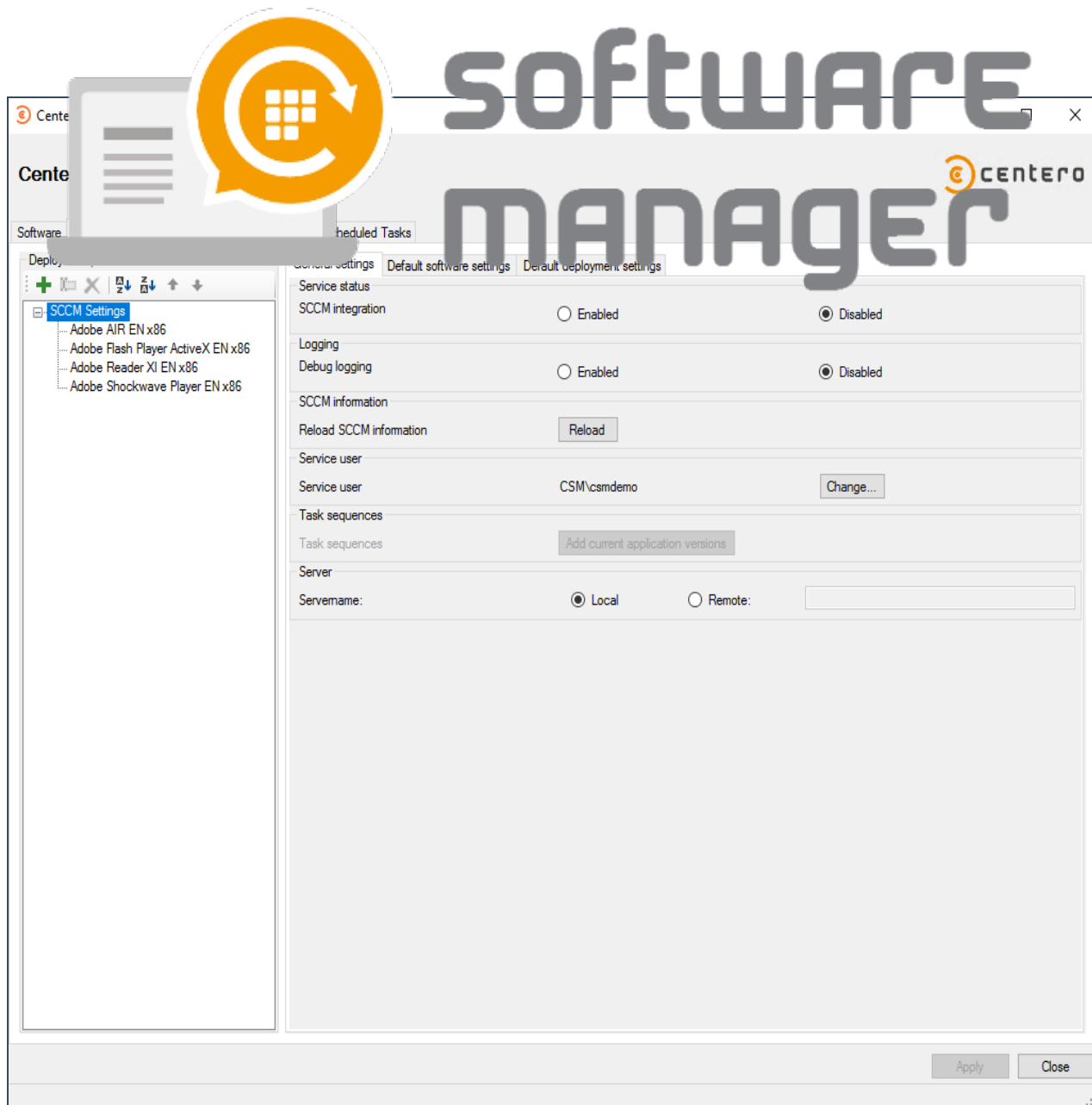
only d... party software when it's in... state. As a... note, i... and that **disabling** the very setting only stops the future deplo... affect the existing ones.

Logging - Debug logging enables logging for debug purposes.

SCCM information - Reload SCCM information is a function to reload information such as distribution groups in CSM for SCCM.

Service User is the account used to run CSM for SCCM. This service account does the necessary background tasks such as initiating download of the newer 3rd party software versions. The account is defined during the initial wizard but can be changed later.

Server - Server name is selected **Remote** in order to use a remote server. In this case a valid server DNS name is required.



Default software settings

General settings

File system root folder for packages is the location where all the 3rd party software packages are downloaded.

SCCM root folder for packages is a name for container that appears in the SCCM console in Applications section. All the imported 3rd party packages will be placed into it.

Send logs to Centero enabled / disabled

E-mail notification

Template name decides which e-mail template you wish to use.



SOFTWARE MANAGER

Email address shown to receiver of the notifications. Multiple e-mail addresses can be used by using a comma.

Application catalog

Application Description with this option you can construct a description for 3rd party software in the SCCM.

Application Name with this option you can construct a name for 3rd party software in SCCM.

Application help documentation is an URL or network path to specify users more information on an application.

Advanced settings

Distribution point group is a selection which group you want to use.

Application category can be used if you want to use it in application catalog.

Slow network mode can be set download / download content / nothing.

Fast network mode can be set run local / run from network.

Persistent content in client cache can be set true / false.

Allow clients to share content on same subnet can be set true / false.

Allow clients to use fallback source location for content can be set true / false.

Logon requirement type can be used to define installation behavior to be depended on an user being logged on or not. The default mechanism for 3rd party applications in CSM for SCCM is to always install. The setting can be used to override the default mechanism.

Superseding can be set all previous versions / all active previous versions / only previous versions / none.

Supersede version exclude can be used to leave out specific version. Version number can be input here but also regular expressions can be used to match multiple versions.

Add operating system requirements can be set default or false.

SOFTWARE MANAGER

-
-
- Remove deployments, supersedencies and retire when latest required.
- Remove deployments, supersedencies when latest available.
- Remove deployments, supersedencies when latest required.

Clear ions

General settings | Default software settings | Default deployment settings

General settings

Filesystem root folder for packages: \\CSM-DEMO-SCCM\C\$\asdasd

SCCM root folder for packages: Software Manager

Send logs to Centero: True

Email notification (all deployments as table)

Template name: [dropdown]

Mail address: [input]

Application catalog

Application Description in application catalog: [PUBLISHER] [NAME] [VERSION] [LANGUAGE] [ARCHITECTURE] ([INSTALLERTYPE])

Application Name in application catalog: [PUBLISHER] [NAME] [VERSION] [LANGUAGE] [ARCHITECTURE]

Application help documentation in application catalog: [input]

Advanced settings

Distributionpoint group: All Distribution Points

Application category: [dropdown]

Slow network mode: Download

Fast network mode: RunLocal

Persistent content in client cache: False

Allow clients to share content on same subnet: True

Allow clients to use fallback source location for content: True

Logon requirement type: Default

Superseding: All previous versions

Supersede version exclude: [input]

Add operating system requirements: Default

Clean previous versions: Remove deployments, supersedencies and retire when latest required

Install process detection (Install Behavior) can be used to check if related processes are in use while trying to install an application. Add the executable name and display name to use the feature. The feature functions differently depending on what kind of deployment



Default deployment settings

This is one of the most important views in CSM for SCCM. You can create a default deployment configuration here which will be used when a new deployment process is created. The **Collections** section enables adding, removing and modifying collections in the default deployment process.

Selecting a collection from a list populates its **Deployment**, **Email notification** and **Scheduling** settings.

Deployment settings

Collection name is an imported list of your collections defined in SCCM.

Collection type can be used to choose whether the collection type is device or user.

Deploy purpose has 3 options: required / available (if the deployment is targeted to a user collection) / available with forced upgrade.

User notification can be set to display all and display in software center only.

Comment can be used as a custom note for deployment. CSM uses date as a comment by default.

Scheduling

Deployment time is dependent on when a new 3rd party software version is released and then downloaded. If time is set to **immediately** deployment will be made right after a new version is downloaded. **After** option should be used when a specific delay is needed between collections or available / force installations.

Make deployment available is the time when you want to make the deployment available to a collection.

Force installation is the time when you want the deployment to be required to a



collec

Email

SOFTWARE MANAGER

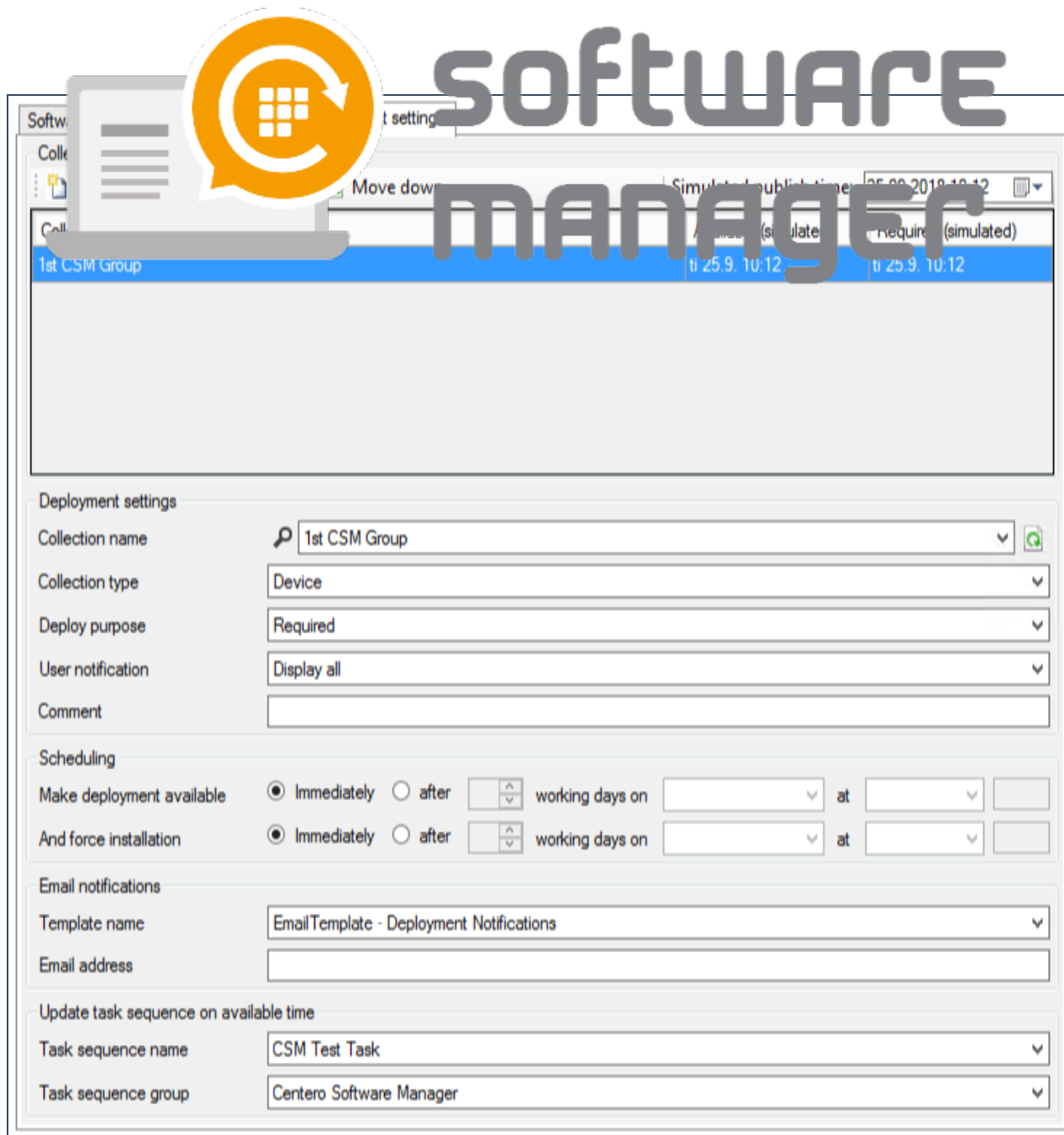
You can specify a template for every collection if necessary. Multiple recipients for the email notification system can be added by separating them with semicolon.

Update task sequence on available time (SCCM credentials in use must have Operating System Deployment Manager role added & SCCM console must be restarted with credentials to [confirm Powershell privileges](#))

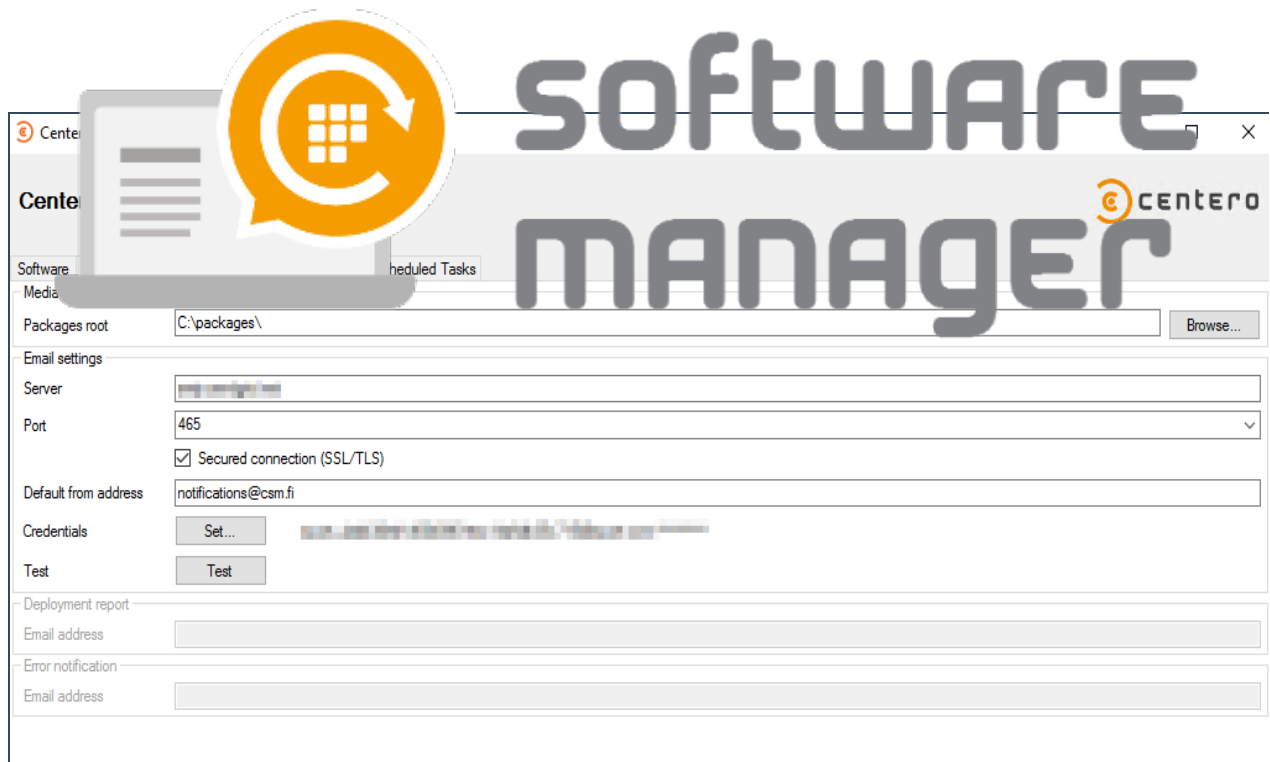
CSM for SCCM can be used to update 3rd party applications in task sequences. The task sequence setting is related to the chosen collection. CSM for SCCM will deploy the new version to task sequence as soon as the **available** time of the deployment is reached.

Task sequence name can be selected.

Task sequence group can be selected.



3. **Settings** view can be used to configure the 3rd party application download location and e-mail settings.



SOFTWARE MANAGER

Centero

Centero

Software Media Scheduled Tasks

Packages root

Email settings

Server

Port

Secured connection (SSL/TLS)

Default from address

Credentials

Test

Deployment report

Email address

Error notification

Email address