

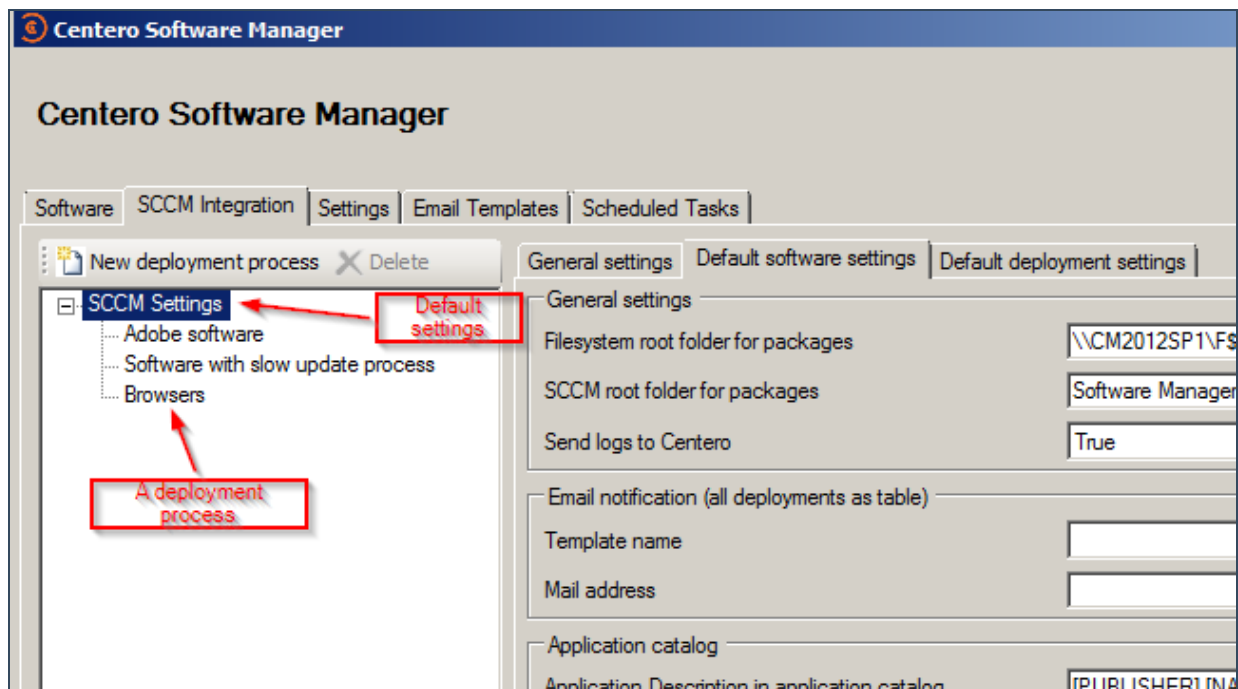
# Deployment processes

## SOFTWARE MANAGER

Deployment process overview

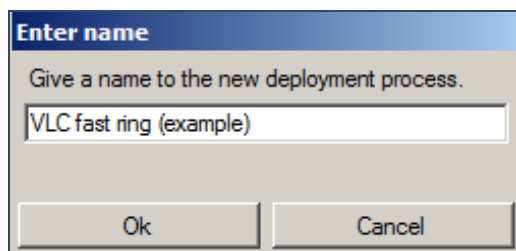
Deployment processes can be defined in SCCM integration tab. The deployment process navigation is in a tree form and default settings are always in the top.

Created deployment processes will appear in the tree view accordingly.



### Creating a new deployment process (example)

1. Click on New deployment process and name it.



2. Select the software you want on this process.

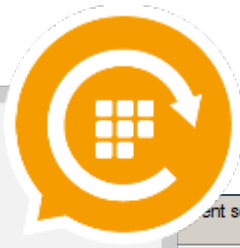


3. Define the expected configuration. If you defined these settings in the default deployment process they will be the same. The most of the time these settings are valid as they are.

Software selection	Software settings	Deployment settings
<b>General settings</b>		
Filesystem root folder for packages	\CM2012SP1\FS\csm	
SCCM root folder for packages	Software Manager	
Send logs to Centero	True	
<b>Email notification (all deployments as table)</b>		
Template name		
Mail address		
<b>Application catalog</b>		
Application Description in application catalog	[PUBLISHER] [NAME] [VERSION] [LANGUAGE] [ARCHITECTURE] ([INSTALLERTYP	
Application Name in application catalog	[PUBLISHER] [NAME] [VERSION] [LANGUAGE] [ARCHITECTURE]	
Application help documentation in application catalog		
<b>Advanced settings</b>		
Distributionpoint group	DP group	
Application category		
Slow network mode	Download	
Fast network mode	RunLocal	
Persistent content in client cache	False	
Allow clients to share content on same subnet	True	
Allow clients to use fallback source location for content	True	
Superseeding	All previous versions	
Superseed version exclude		
Add operating system requirements	Default	
Clean previous versions	Remove deployments, supersedences and retire when latest required	

4. Define advanced deployment settings as you see fit. In this scenario we have used a rather quick deployment pace. All the three deployment steps are followed through in 5

work



# SOFTWARE

# MANAGER

Software deployment settings

Collection name: Production | Simulated push time: 18.9.2017 10:00

Collection	Available (simulated)	Required (simulated)
1st level testing	ma 18.9. 16:00	ma 18.9. 16:00
2nd level testing	ke 20.9. 16:00	ke 20.9. 16:00
<b>Production</b>	<b>pe 22.9. 16:00</b>	<b>pe 22.9. 16:00</b>

**Deployment settings**

Collection name: Production

Collection type: Device

Deploy purpose: Required

User notification: Display all

Comment:

**Scheduling**

Make deployment available:  Immediately  after  working days on  at

And force installation:  Immediately  after  working days on  at

**Email notifications**

Template name: EmailTemplate - All deployments table

Email address: deployments@centero.fi