

Inst
Last Modified

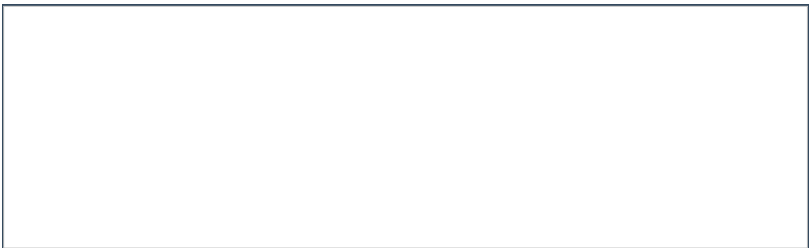


SOFTWARE MANAGER

1. Download the package from <http://portalcenter.firmit.com/CS/2011/01/01/SoftwareManager.zip> and save it to a server or remote console, which will be used in SCCM for SCCM deployment.



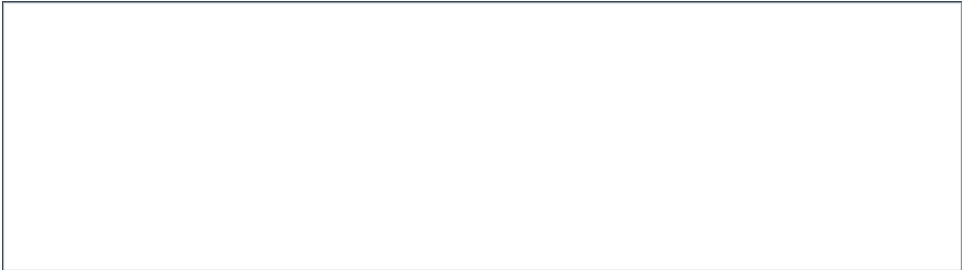
2. Extract the package and open the folder.



3. Run `install.cmd` as administrator.



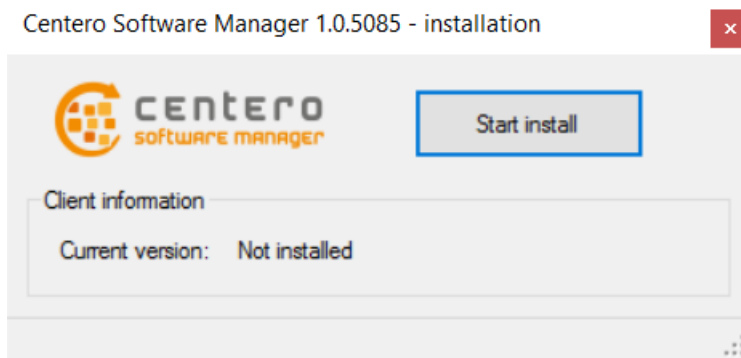
4. Installation proceeds quickly and command prompt notifies when the installation is complete.



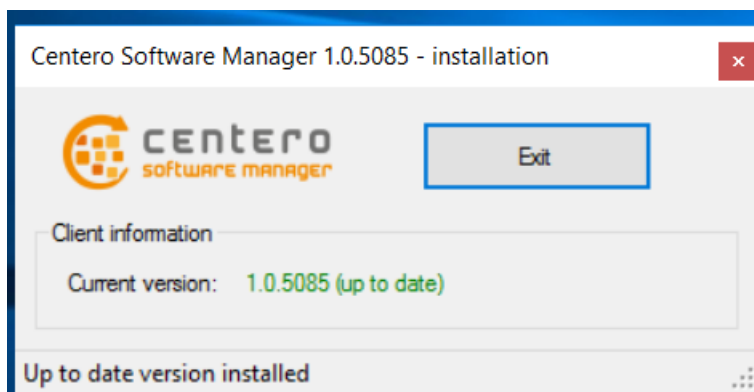


Starting from 1.0.5085 version:

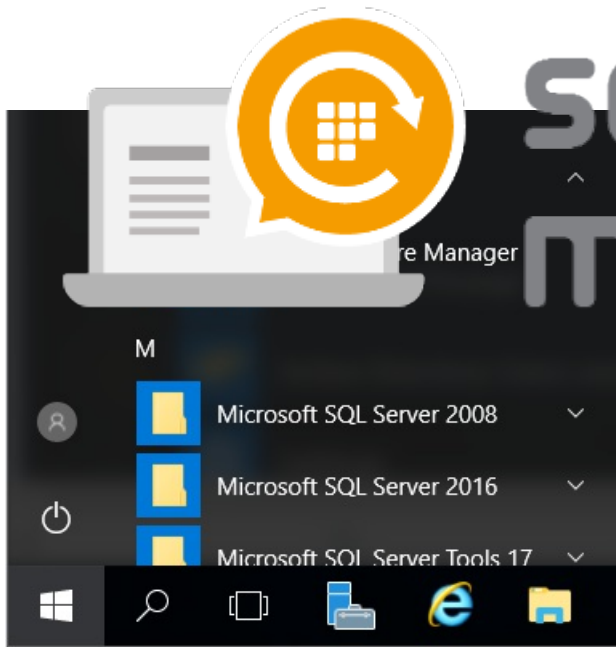
1. Download the installer (CSM Integration Client Installer.exe) and save it to the server or remote console, which will be used in CSM for SCCM deployment.
2. Run the installer and select "Start install". Confirm installation with "Yes"



3. CSM is now installed. Close the installer.



4. CSM for SCCM can be now launched from start menu.



SOFTWARE MANAGER