

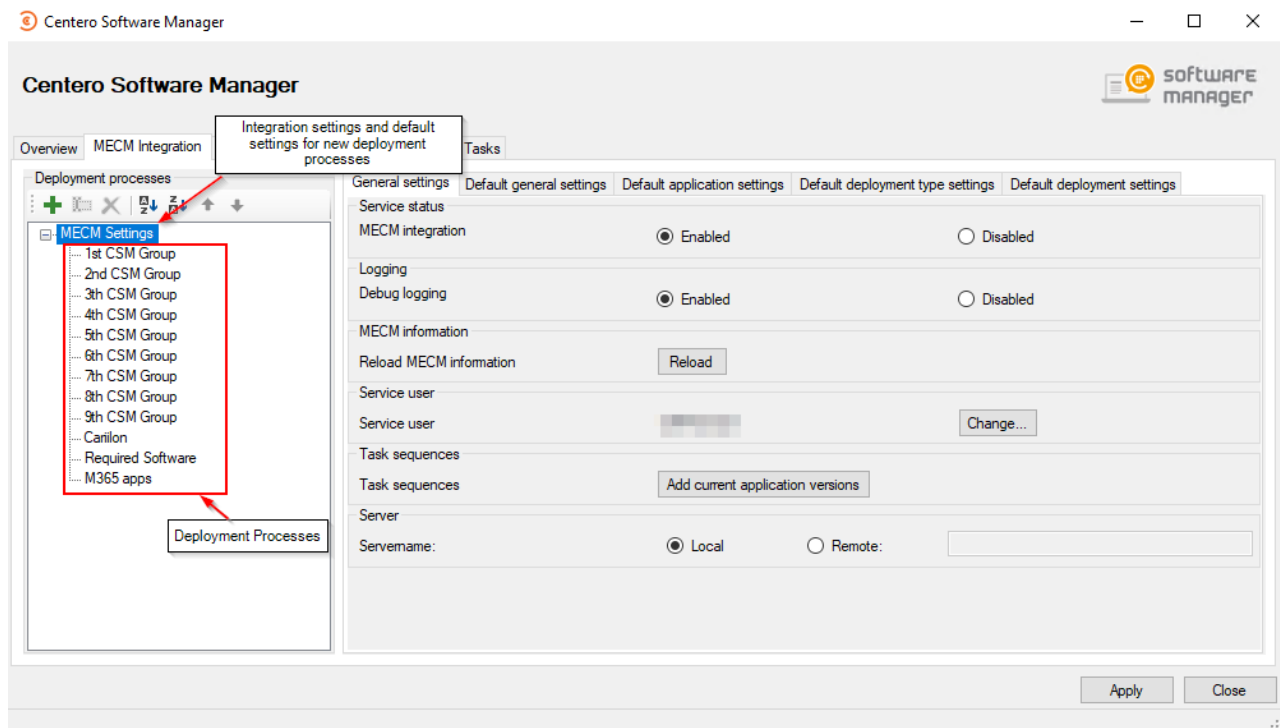
# Deployment Process Overview

Last Modified on 21/10/2022 10:31 am EEST

## Deployment process overview

Deployment processes are the key feature of CSM. From deployment process you will configure the settings related to application(s) selected to the deployment process, and also configure deployment target collections and their deployment schedule.

Deployment processes can be configured from **MECM Integration** tab. Deployment processes are located on left pane, under **MECM Settings**.

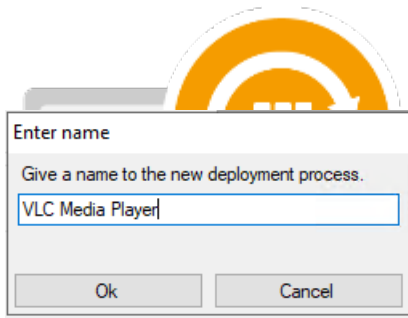


From **MECM Settings** you can configure settings regarding MECM integration and default deployment process. From default settings you can configure a deployment process template that will be a base for upcoming deployment processes. Changing the default settings won't affect existing deployment processes.

- Read more:
  - [General Settings](#)
  - [Deployment Process General Settings](#)
  - [Deployment Process Application Settings](#)
  - [Deployment Process Deployment Type Settings](#)
  - [Deployment Process Deployment Settings](#)

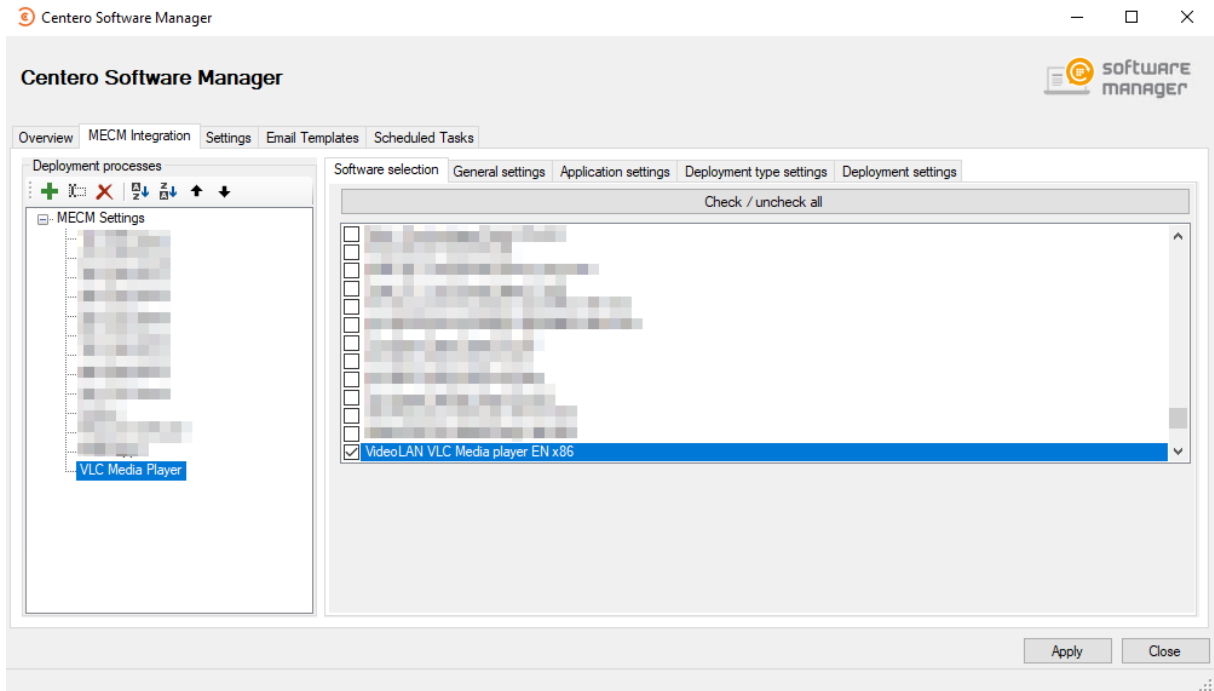
## Creating a new deployment process (example)

1. Click on **New deployment process** and name it

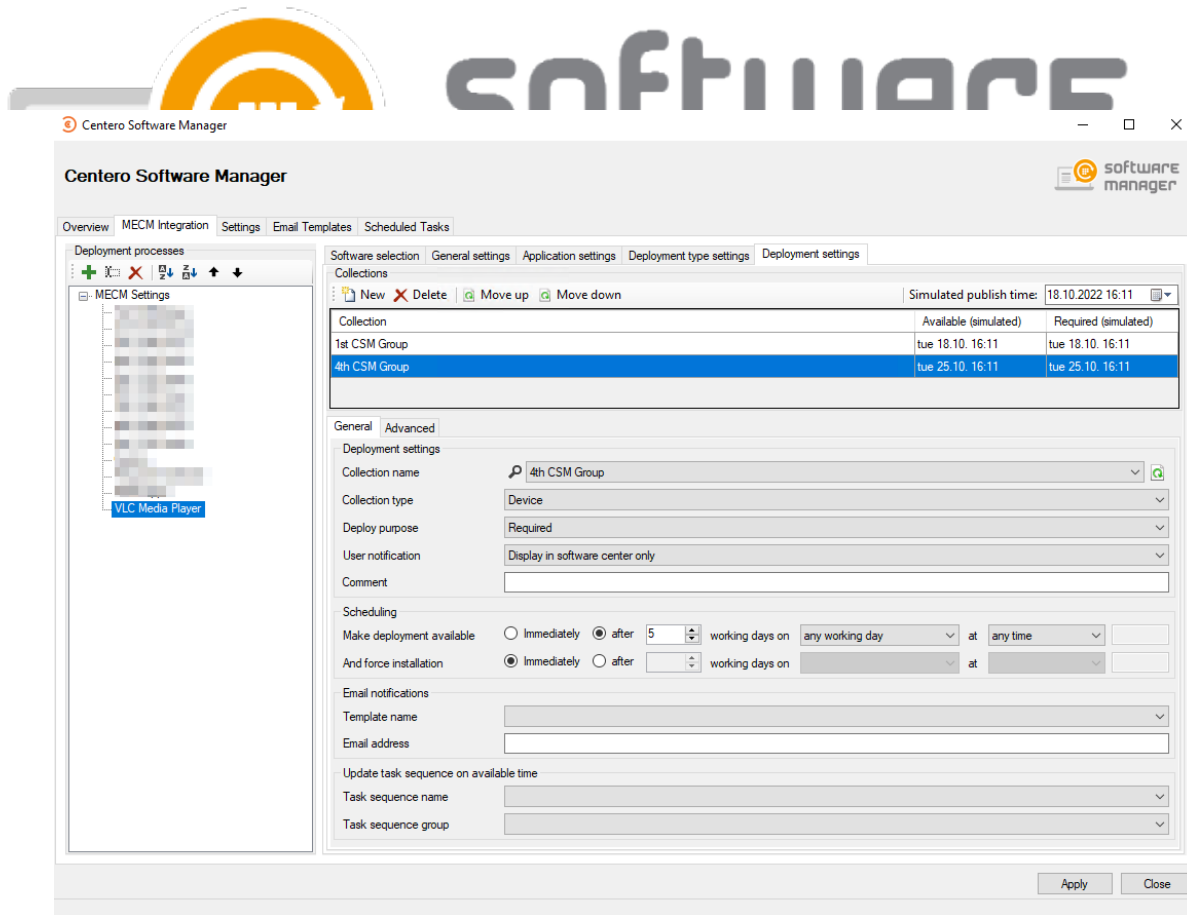


# software

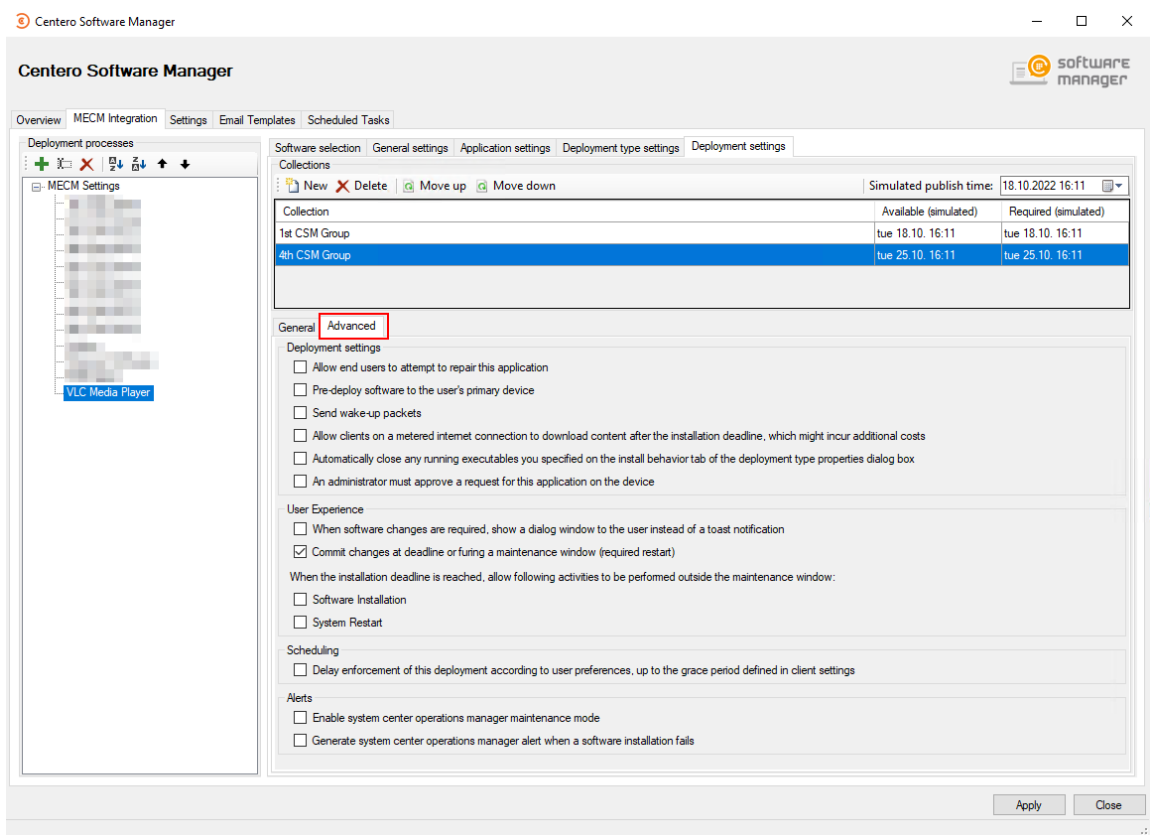
2. Select the application or applications you want on this deployment process



3. Review **General**, **Application** and **Deployment type settings** tabs. These settings are same as configured into default settings and mostly require no need for changes
4. Configure target collections and schedule from **Deployment settings** tab
  - In our example the application chosen to the deployment process will be deployed as soon as possible to **1st CSM Group** device collection and after 5 working days to **4th CSM Group** device collection



- You can configure additional deployment settings from **Advanced** tab



5. Select **Apply** to save deployment process.

- CSM will download and deploy the application automatically within 30 minutes, or you can download the application instantly by selecting **Start download** in **Overview** tab

