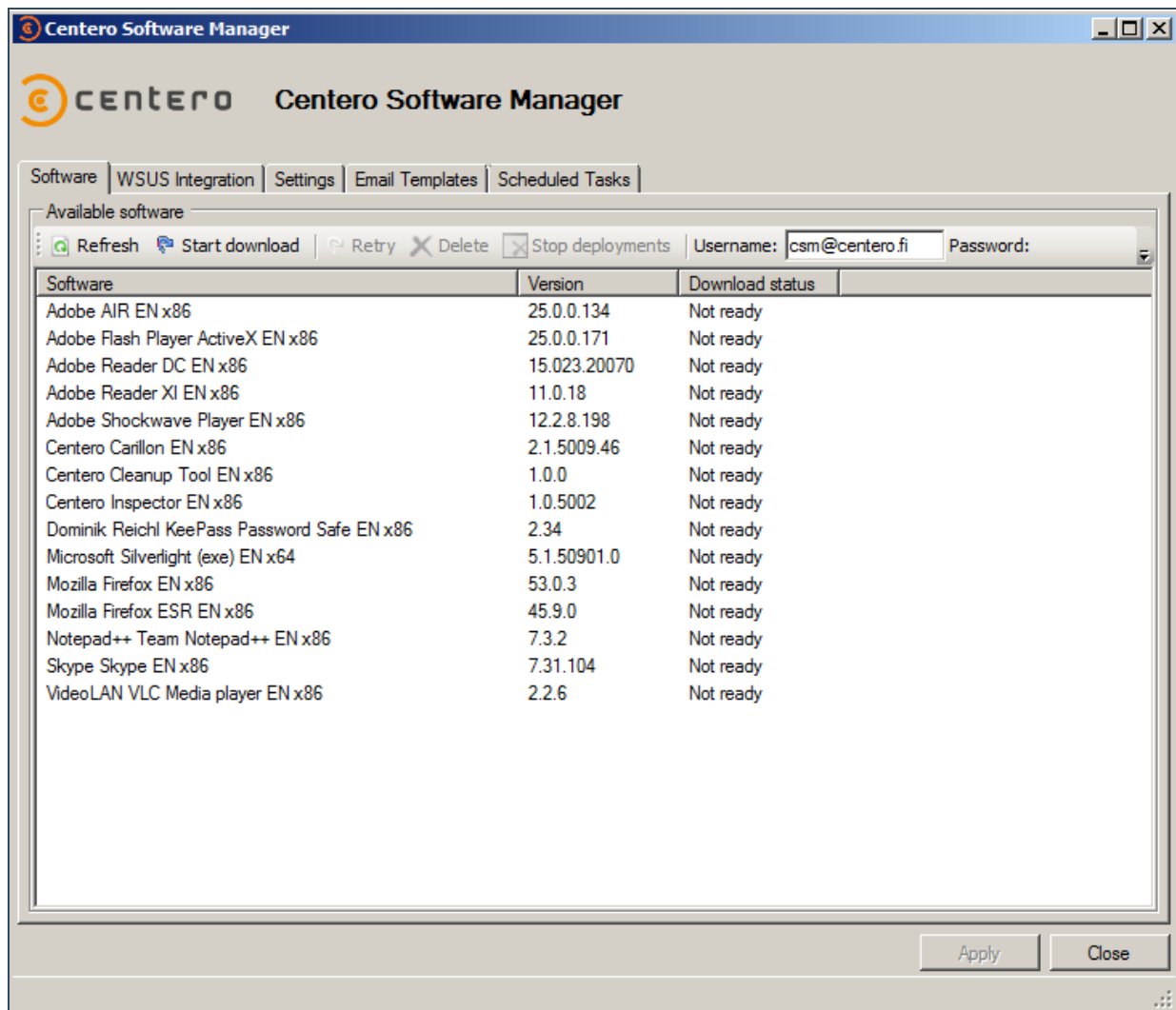
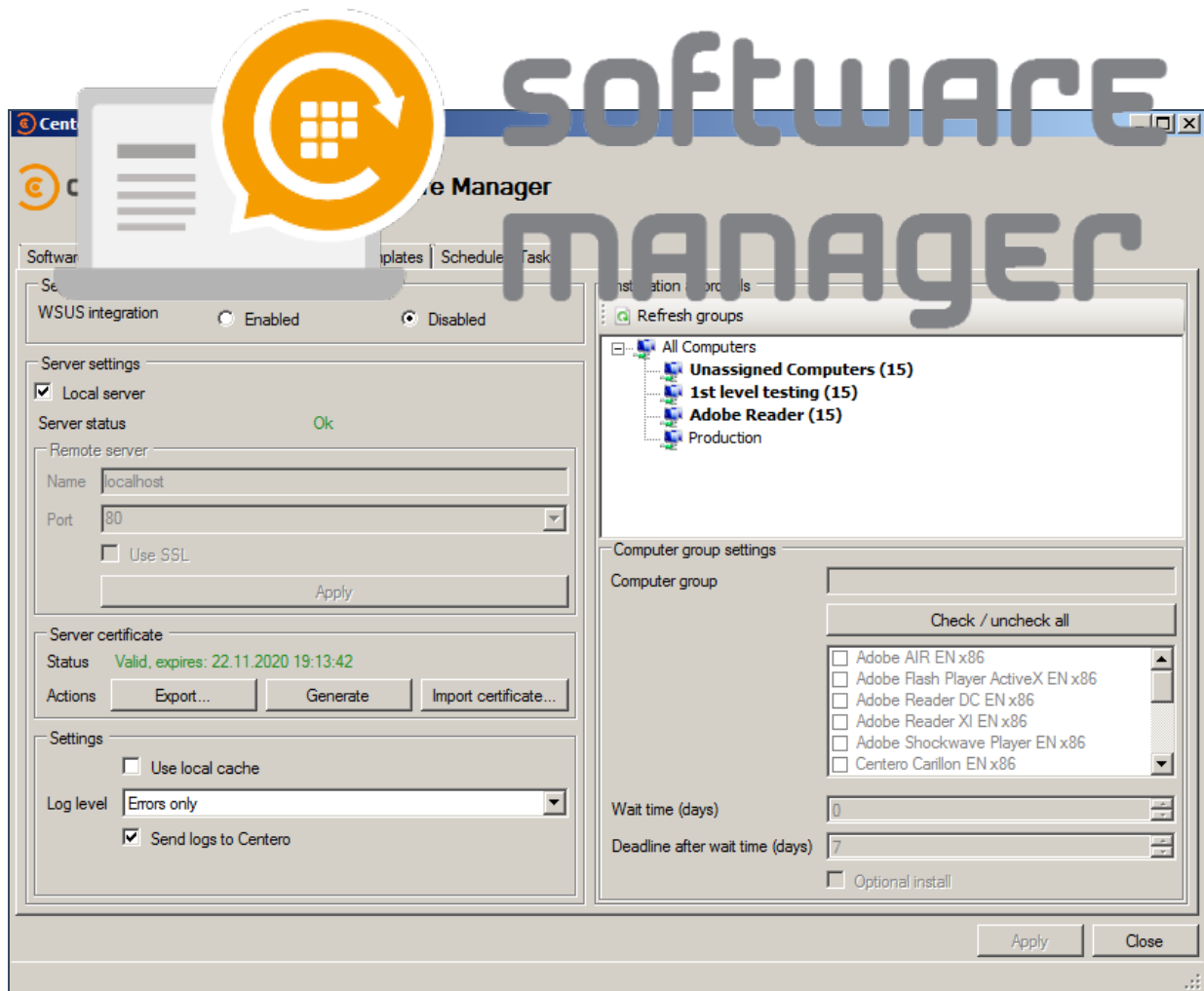


Getting started with Centero Software Manager

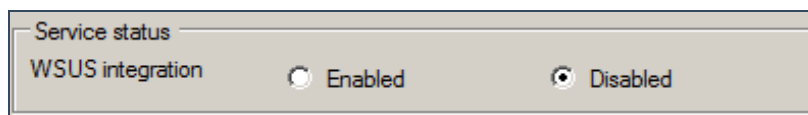
1. If the final selection to start deployment was No then CSM for WSUS will automatically launch. The first view is **Software** page which basically displays the selected 3rd party software and their statuses. At this point, before the first deployments, we want to make sure that the defined configuration is correct. You can do that by clicking WSUS Integration.



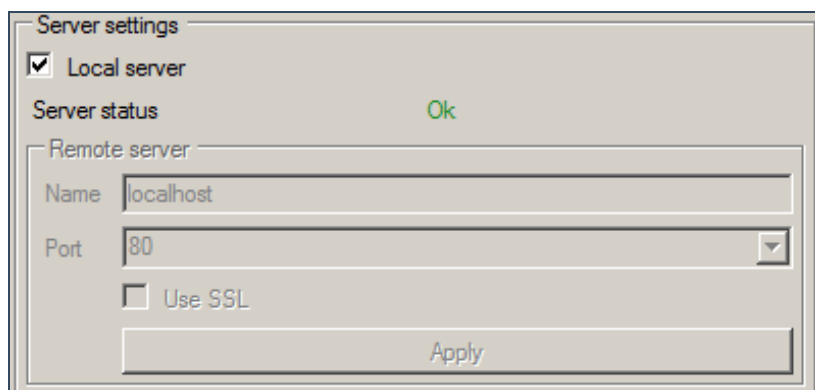
2. There are 6 different configuration areas on this view. Explaining all of them is covered in the document.



3. **Service status** is a selection whether the automatic software deployments and updates are enabled or not.



4. In **server settings** the WSUS server itself can be configured. CSM supports both, a local and a remote server.

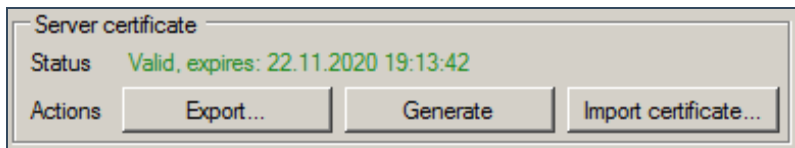


5. A server certificate is required in order to publish 3rd party software to WSUS server. If there's an existing certificate it can be used by **importing** it. If there's no certificate,



one c... After the certificate is ready, it can be exported by
choos...
The c... must be also stored on workstations in order to deploy 3rd
party software to them. The certificate must be stored into both **Trusted root
certification authorities** and **Trusted publishers** containers.

We recommend to do the certificate deployment by using Group Policy. We have more specific instructions for that.



6. The **installation approval** is a generated view from WSUS groups and a number of 3rd party software allocated to them. These groups can be navigated by clicking on them. This will populate the information below the view to **computer group settings**.

In this view you can select which 3rd party software are targeted to specific groups and what are the time settings for the deployments. **Wait time** is the time that selected 3rd party software will become available to computers in the selected group. The time will start elapsing from the moment when we have published the new version of a 3rd party software and it's downloaded to the server.

It's important to acknowledge that the wait time is an artificial delay option made possible by CSM. WSUS doesn't originally provide wait time but only deadline. For this reason, updating wait time configuration for a deployment is effective next time when a new version of 3rd party software is published.

Deadline is different from wait time. Instead of software becoming available installation to computers it will become a required installation. Deadline-time will begin to elapse from the moment when wait time has completed.

Optional install does only work for Windows 7. A deployment of this kind will make a 3rd party software only available but not required.



Computer group settings

Computer group

- Microsoft Silverlight (exe) EN x64
- Mozilla Firefox EN x86
- Mozilla Firefox ESR EN x86
- Notepad++ Team Notepad++ EN x86
- Skype Skype EN x86
- VideoLAN VLC Media player EN x86

Wait time (days)

Deadline after wait time (days)

Optional install