

Centero Software Manager Application Groups Feature

Application Groups are used to automatically update the applications that were deployed only into Company Portal as available type deployment.

For this feature to function an additional consent from a Global Administrator is required. You can find instructions for additional consent from [here](#).

1. Create a new Azure AD group from Azure Portal for each application you want to update with Application Group feature. CSM for Intune will update group members automatically

- **Group type:** Security
- **Membership type:** Assigned
- **Example:**

Group type * ⓘ
Security

Group name * ⓘ
CSM for Intune - Firefox

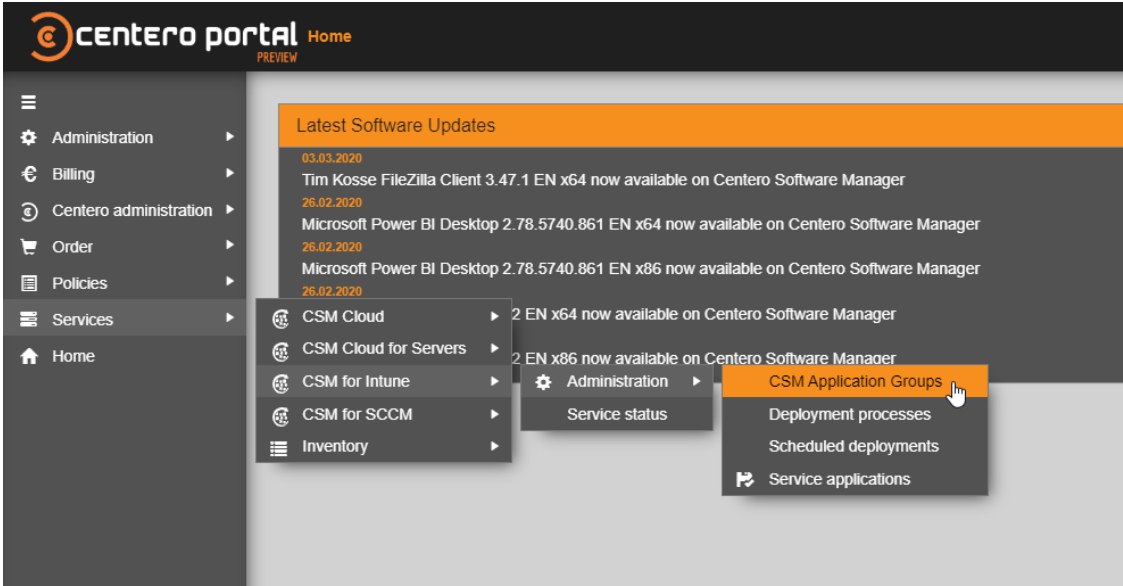
Group description ⓘ
Enter a description for the group

Membership type * ⓘ
Assigned

Owners
No owners selected

Members
No members selected

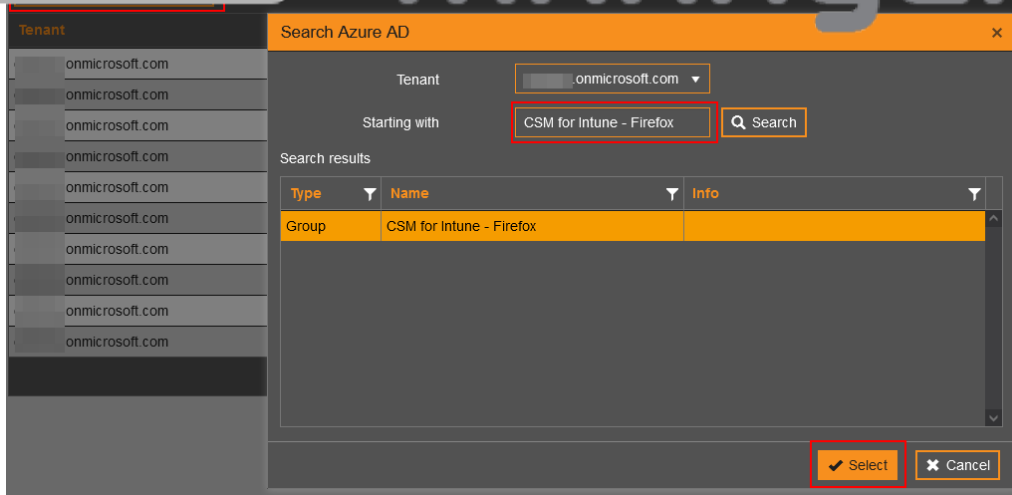
2. In Centero Portal, browse to **Services -> CSM for Intune -> Administration -> CSM Application groups**



3. Click **Create CSM application group** and search for the previously created Azure AD group to be used

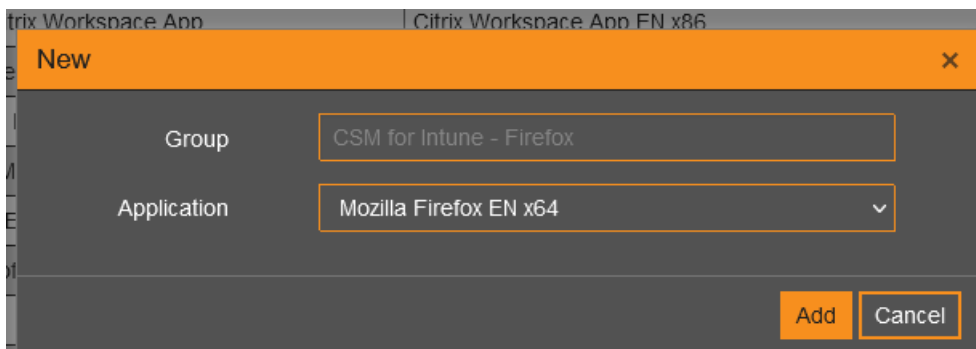


SOFTWARE MANAGER



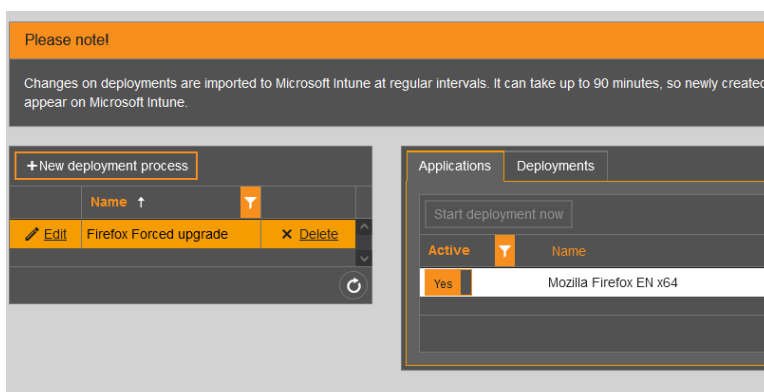
4. From "application" drop down select the application that correspond the specified group

- o Example:
- o



5. Add the group into a new application specific deployment process from **Services -> CSM for Intune -> Administration -> Deployment processes** page. You should use the deployment process to update only the specific application.

- o Example:
- o

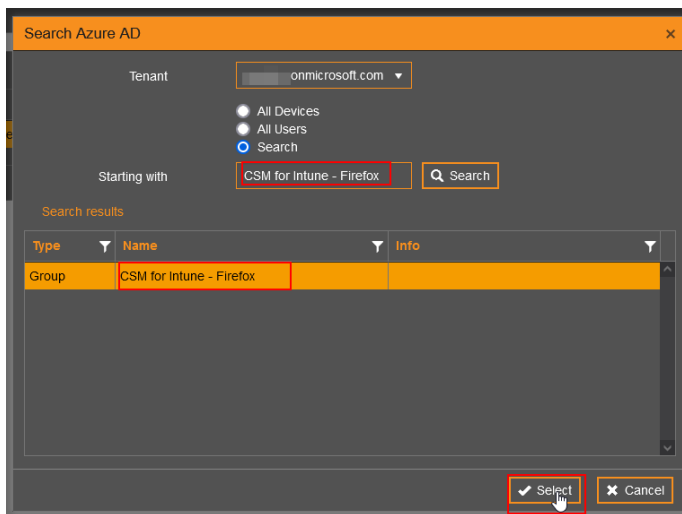


6. Add group into the application specific deployment process from **Deployments** tab



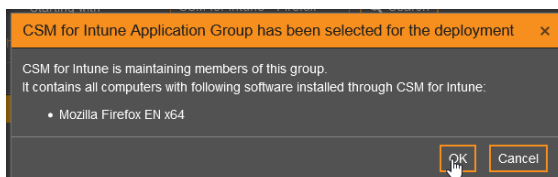
- Search for the group and **Select**

◦



- **Confirm**

◦



- **Configure deployment schedule and Add. Make sure the assignment type is required**

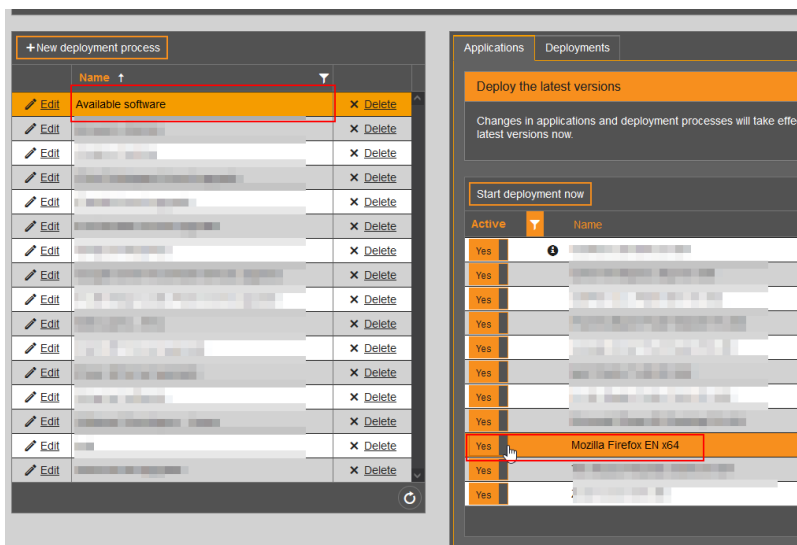
◦



Deployment configuration form for 'Required' type. The form includes sections for 'Email notifications' (Deployment created, Application created, Errors) and 'Restart settings' (Grace period, Countdown dialog, Snooze duration). It also features 'Application availability' and 'Installation deadline' sections with options for 'As soon as possible' and 'Scheduled' deployment, including wait times and scheduling details like Time (UTC), Day of the week, and Day of the month.

7. Make sure you have a deployment process that deploys the application into Company Portal with **Available** type deployment. Available type deployment should be targeted to **User** group.

- You can add available type deployment into the same deployment process as **required** deployment, or you can use a separate deployment process for all of your applications.
- Example:



◦

